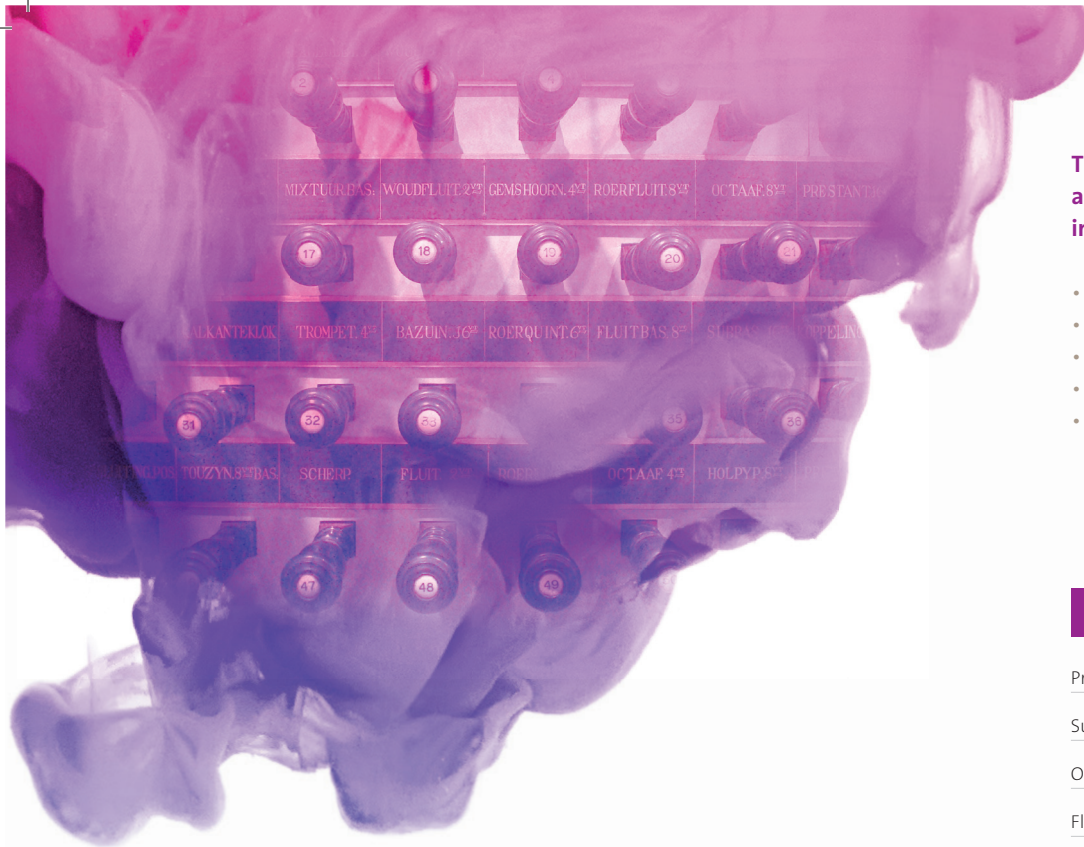




THE DOMTOREN IS THE TALLEST CHURCH TOWER IN THE NETHERLANDS

The Johannes LIVE marks the definitive dawn of a new era in organs. Never before have the classical pipe organ and the advanced digital organ converged so closely. From now on, you'll be playing directly on the authentic organs standing in dozens of famous international churches and cathedrals. Fly in a heartbeat from Paris through Utrecht to Dresden, from the comfort of your own living room – With the Johannes LIVE.

L i V E
JOHANNUS



The **Johannus LiVE** allows you to play the authentic **Bätz organ from the Domkerk in your own living room.**

- organ builder: Bätz
- style: rococo (Baroque)
- number of stops: 49
- number of pipes: 3,698
- start of its construction: 1568

DISPOSITION


PEDAAL		HOOFDWERK	
Prestant	16vt	Prestant	16vt
Subbas	16vt	Bourdon	16vt
Octaafbas	8vt	Octaaf	8vt
Fluitbas	8vt	Roerfluit	8vt
Roerquint	6vt	Octaaf	4vt
Octaaf	4vt	Gemshoorn	4vt
Mixtuur	IV	Quint	3vt
Bazuin	16vt	Octaaf	2vt
Trombone	8vt	Woudfluit	2vt
Trompet	4vt	Mixtuur	IV-VIII
Cinq	2vt	Sexquialter	IV
		<i>Fagot</i>	16vt
		<i>Trompet</i>	8vt
RUGWERK		BOVENWERK	
Prestant	8vt	Prestant	8vt
Holpyp	8vt	Holpyp	8vt
Quintadeen	8vt	Fluit travers	8vt
Octaaf	4vt	Baarpyp	8vt
Roerfluit	2vt	Viola de Gamba	8vt
Quint	3vt	Octaaf	4vt
Octaaf	2vt	Open fluit	4vt
Fluit	2vt	Roerquint	3vt
Mixtuur	III-VI	Woudfluit	2vt
Scherp	III-IV	Flageolet	1vt
Cornet	V	Carillon	III
<i>Trompet</i>	8vt	<i>Trompet</i>	8vt
<i>Touzyn</i>	8vt	<i>Vox Humana</i>	8vt

Soaring 112 meters into the sky above Utrecht, the Domtoren is part of the city's cathedral. Its respectable height allows the Domtoren to attain two prestigious records: the tallest church tower in the country, and the tallest building in the city of Utrecht.

The Domkerk nestles beside this massive tower, a historic house of God whose first stones were laid in the thirteenth century. This historic church is both a place of worship for the congregation it serves and an important tourist attraction. Nearly 250,000 people find their way to the Domkerk every year.

One of the church's appealing features is its famous Bätz organ, used for dozens of concerts every year by organists from the Netherlands and abroad.

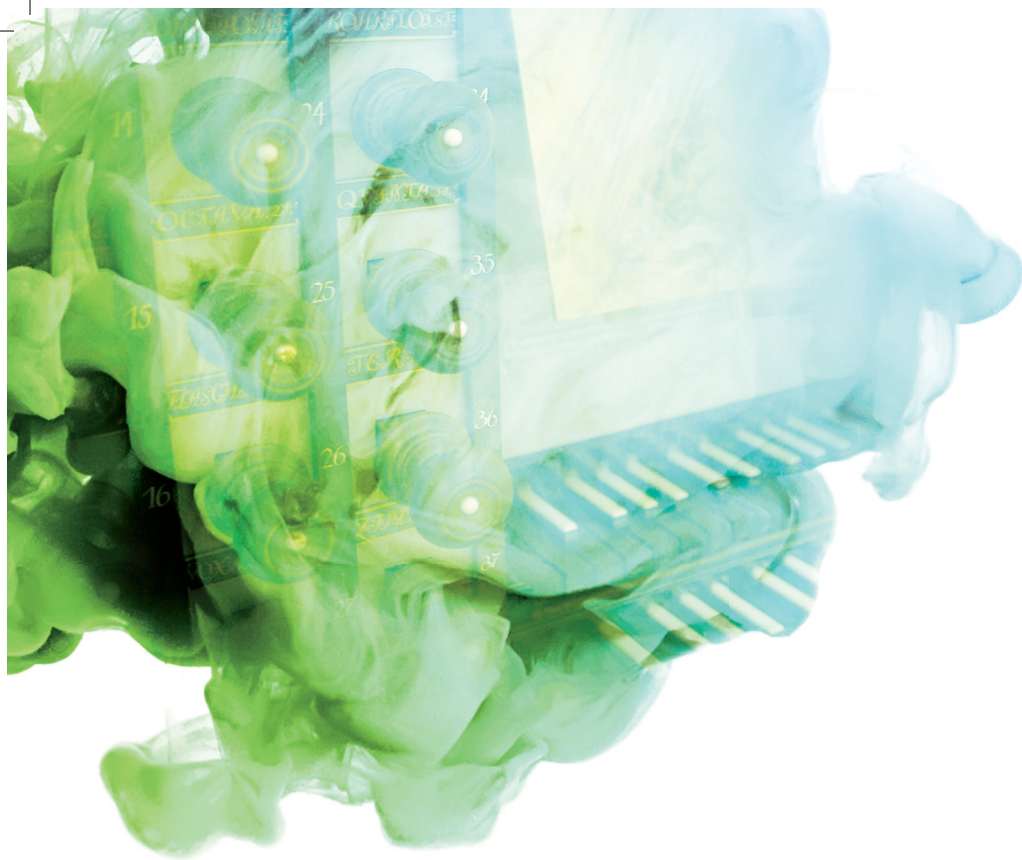
The three-manual organ with its 49 stops is known for its beautiful tremulants and warm reverb.



THE HOFKIRCHE HOUSES THE ONLY REMAINING SILBERMANN ORGAN IN DRESDEN

The Johannes LIVE marks the definitive dawn of a new era in organs. Never before have the classical pipe organ and the advanced digital organ converged so closely. From now on, you'll be playing directly on the authentic organs standing in dozens of famous international churches and cathedrals. Fly in a heartbeat from Paris through Utrecht to Dresden, from the comfort of your own living room – With the Johannes LIVE.

L i V E
JOHANNUS



The Silbermann organ in Dresden's Hofkirche can be considered an exceptional treasure. The instrument was the last instrument built by Gottfried Silbermann (1683-1753) and the last organ in the city to recall his work. Two of his earlier organs were lost in 1945.

Silbermann never saw the completion of this organ, since he died shortly before the finishing touches were added. His pupil and colleague Zacharias Hildebrandt completed the final work on the organ after Silbermann's death. The main organ in the Hofkirche has 47 stops and three manuals.

The **Johannus LiVE** allows you to play the authentic Silbermann organ from the Hofkirche in your own living room.

- organ builder: Gottfried Silbermann
- style: Baroque
- number of stops: 47
- number of pipes: approx. 3,000
- start of its construction: 1750

DISPOSITION

PEDAL		II HAUPTWERK	
Untersatz	32F	Principal	16F
Principalbass	16F	Bordun	16F
Subbass*	16F	Principal	8F
Octavbass	8F	Viol di Gamba	8F
Gedacktbass*	8F	Rohrflöt	8F
Octavbass	4F	Octava	4F
Pedalmixtur	VI	Spitzflöt	4F
Posaunenbass	16F	Qvinta	3F
Trompetenbass	8F	Octava	2F
Clarinbass	4F	Tertia	13/5F
		Mixtur	IV
		Zimbeln	III
		Kornett	V
		Fagott	16F
		Trompet	8F
		III OBERWERK	
		Quintadehn	16F
		Principal	8F
		Unda maris	8F
		Gedackt	8F
		Quintadehn	8F
		Octava	4F
		Rohrflöt	4F
		Nassat	3F
		Octava	2F
		Tertia	13/5F
		Flaschflöt	1F
		Mixtur	IV
		Echo Kornett	V
		Vox humana	8F

* Stop added by Johannus



CAVAILLÉ-COLL WAS THE GREATEST ORGAN BUILDER OF THE 19TH CENTURY

The Johannes LIVE marks the definitive dawn of a new era in organs. Never before have the classical pipe organ and the advanced digital organ converged so closely. From now on, you'll be playing directly on the authentic organs standing in dozens of famous international churches and cathedrals. Fly in a heartbeat from Paris through Utrecht to Dresden, from the comfort of your own living room – With the Johannes LIVE.

L i V E
JOHANNUS



Born in France, Aristide Cavaillé-Coll (1811-1899) is considered the most influential organ builder of the nineteenth century. He was notable enough to have a planetoid in our solar system named after him. Connoisseurs particularly praise his work in building symphonic organs, which can mimic the sound of separate instruments as well as ensembles. His pipe organs were so phenomenal in their construction that various major composers, including Charles-Marie Widor and Louis Vierne, were inspired by his instruments in writing their organ symphonies.

Within France and beyond, Cavaillé-Coll left an impressive legacy of organs to musical history. He built nearly eighty organs in all.

One of his exceptional instruments stands in the Église Notre-Dame d'Auteuil in Paris. Its 52 stops, including numerous reeds and many 2, 4, 8, 16 and 32' registers, express the characteristic tones of French symphonic organs in the way they blend together.

The **Johannus LiVE** allows you to play the authentic Cavaillé-Coll organ from Notre-Dame in your own living room.

- organ builder: Aristide Cavaillé-Coll
- style: French symphonic
- number of stops: 52
- number of manuals: 3
- start of its construction: 1884

DISPOSITION

PÉDALE		GRAND ORGUE	
Soubasse	32'	Montre	16'
Soubasse	16'	Bourdon	16'
Flûte	16'	Montre	8'
Principal	8'	Salicional	8'
Basse	8'	Flûte harmonique	8'
Flûte	8'	Bourdon	8'
Flûte	4'	Prestant	4'
Bombarde	16'	Flûte douce	4'
Trompette	8'	Doublette	2'
Clairon	4'	Cornet	5 rangs
		Fourniture	4 rangs
		Cymbale	4 rangs
		Bombarde	16'
		Trompette	8'
		Clairon	4'
POSITIF EXPRESSIF		RÉCIT EXPRESSIF	
Principal	8'	Quintaton	16'
Bourdon	8'	Cor de nuit	8'
Flûte creuse	8'	Viole de gambe	8'
Flûte	4'	Voix céleste	8'
Quinte	2 2/3'	Flûte traversière	8'
Quarte	2'	Flûte octavante	4'
Tierce	1 3/5'	Nasard	2 2/3'
Larigot	1 1/3'	Octavin	2'
Fourniture	4 rangs	Fourniture	4 rangs
Cymbale	4 rangs	Bombarde	16'
Trompette	8'	Trompette harmonique	8'
Cromorne	8'	Basson et Hautbois	8'
Clairon	4'	Voix humaine	8'
		Clairon	4'